

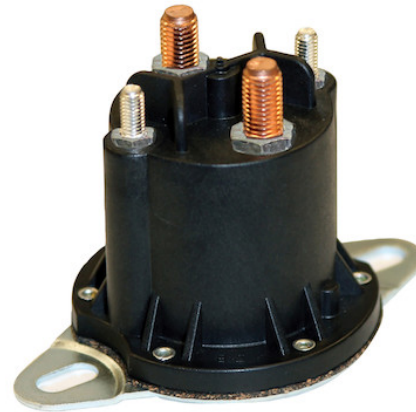


12 Volt Plastic Case Insulated Solenoid Continuous Duty Motor Relay

Buyers Part Number: 1306317

Buyers Products Continuous Duty 12 Volt Plastic Case Solenoid will not overheat when you are operating your plow or spreader and has a waterproof design.

- Keep on plowing with this continuous starter solenoid.
- Continuous duty starter stays on and won't overheat.
- Reliable starting power for your crane, lift gate, spreader, or plow.
- Sealed waterproof design.



Specifications

Compares To	Western 56131K-1	Current Rating	150 A
Duty	Continuous	Housing Material	Polymer
Mount Style	Flat	Number of Terminals	4
Switch Style	4 Post	Shipping Weight	0.85 lb