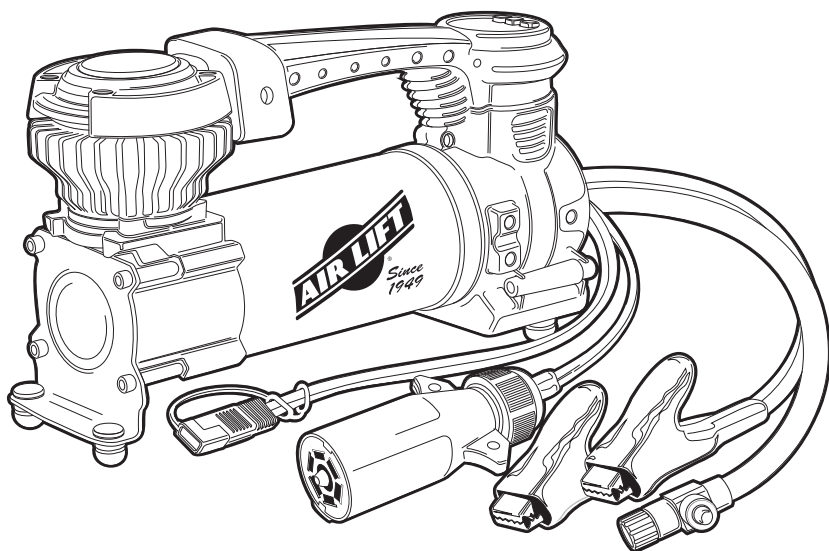


Digital Portable Air Compressor



Installation Guide



Watch the video

Info on Table of Contents page

Kit 16188

For maximum effectiveness and safety, please read these instructions completely before proceeding with installation.

Failure to read these instructions can result in an incorrect installation.

Protect your Air Lift Purchase by Completing your Warranty Registration



Thank you for purchasing an Air Lift load support product!

Take a photo of your sales receipt and then scan the QR code to complete your online warranty registration.

TABLE OF CONTENTS

2 System Overview

3 Product Description and Features

4 Introduction

Important Safety Notice
Notation Explanation

6 Operating the Digital Portable Air Compressor

Before Use
Using the Compressor

8 Maintenance and Use Guidelines

Specifications
Troubleshooting Guide
7-Way Power Access Plug

9 Limited Warranty and Return Policy

Video-enhanced installation guides

Visit airliftcompany.com/workshop/category/install-videos to access our installation video archive*.

System Overview

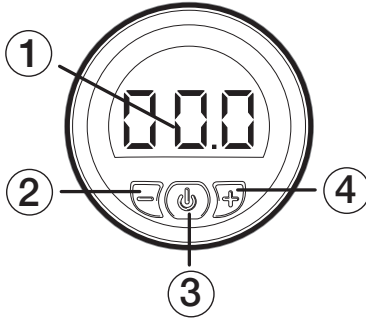
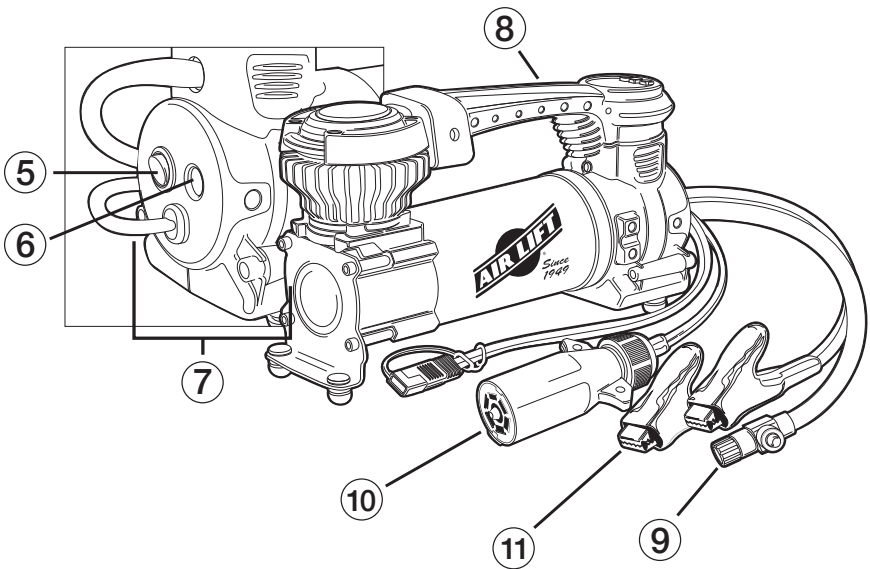


Fig. 1



Product Description and Features

PRODUCT DESCRIPTION

1. Digital gauge*
2. - Button (decrease pressure)
3. Start button
4. + Button (increase pressure)
5. On/Off Power switch
6. LED work light/power indicator
7. 3-piece Inflation tips kit
8. Plastic hand grip
9. Rubber hose with twist-on tire chuck
10. 7-Pin Power connector
11. Battery clamp connectors

FEATURES

- Preset pressure with auto shut-off
- Easy to read digital gauge*
- SAE 2-Pin connection with 7-Pin power connector and battery clamp connector
- LED work light/power indicator
- 3-piece Inflation tips kit with Presta valve adapter
- Deluxe carry bag

* Accuracy: +/- 1 PSI



Missing or damaged parts? Call Air Lift customer service at (800) 248-0892 for a replacement part.

Introduction

The purpose of this publication is to assist with the operation of the Digital Portable Air Compressor.

It is important to read and understand the entire installation guide before beginning installation or performing service or repair. The information here includes a hardware list, tool list, step-by-step installation information and safety information.

Air Lift Company reserves the right to make changes and improvements to its products and publications at any time.

Contact Air Lift Company at **(800) 248-0892** or online at **www.airliftcompany.com** for the latest version of this manual.

IMPORTANT SAFETY NOTICE

This is a 12V DC portable air compressor designed to be powered from your vehicle's battery. It can be used for inflating tires, sports balls, and other inflatable equipment. The engine MUST be running while using this compressor.

1. Do not attempt to disassemble, repair, or modify this unit.
2. Never allow children to operate this compressor.
3. Do not touch any parts other than the ON/OFF switch and carry handle with bare hands. This compressor becomes HOT during and immediately after use.
4. Use in dry, well-ventilated environments only. Protect the unit from rain, snow, and other sources of heavy moisture.
5. Do not leave the compressor running unattended.
6. Do not pump anything other than atmospheric air.
7. Do not operate the compressor near fire, flammable gas or liquid.
8. Never carry the compressor by the hose or power cord.
9. Never point the air nozzle towards another person or any part of the body.
10. Be sure the unit's power switch is in the OFF position when not in use.

NOTATION EXPLANATION

Hazard notations appear in various locations in this publication. Information highlighted by one of these notations must be observed to help minimize risk of personal injury or possible improper installation, which may render the vehicle unsafe. Notes are used to help emphasize areas of procedural importance and provide helpful suggestions. The following definitions explain the use of these notations as they appear throughout this guide.



DANGER - INDICATES IMMEDIATE HAZARDS WHICH WILL RESULT IN SEVERE PERSONAL INJURY OR DEATH.



WARNING - INDICATES HAZARDS OR UNSAFE PRACTICES WHICH COULD RESULT IN SEVERE PERSONAL INJURY OR DEATH.



CAUTION - INDICATES HAZARDS OR UNSAFE PRACTICES WHICH COULD RESULT IN DAMAGE TO THE MACHINE OR MINOR PERSONAL INJURY.



Indicates a procedure, practice or hint which is important to highlight.

Operating the Digital Portable Air Compressor

NOTE**IMPORTANT:**

Engine MUST be running while using the Digital Portable Compressor.

BEFORE USE

Make sure the power switch is in the OFF position before connecting to the power source.

USING THE COMPRESSOR

1. Connect the 2-Pin SAE connector on your compressor to the 7-way plug or battery clamp assembly (Fig. 1).
2. Plug the 7-way harness into the tow vehicle's receptacle outlet for power or connect the black clamp to the negative (-) side of the battery or a ground source.
3. **Turn the vehicle engine ON.**
4. Attach the twist-on air chuck to the valve stem.
5. Turn the power switch to ON (Fig. 1, item 5), the gauge will illuminate.
6. Press the (+) and (-) buttons simultaneously to select the desired pressure unit (PSI, BAR, KPA or Kg/cm²).
7. Use the (+) and (-) buttons to select the desired inflation pressure (Fig. 2).
8. Press the start button ON (Fig. 2), the compressor will begin to inflate and automatically shut off at the desired pressure.
9. Turn the power switch OFF.
10. Remove the air hose from the valve stem and detach the compressor's clamps from the battery or remove the 7-way plug from the power source.



TO AVOID BURSTING, NEVER EXCEED RECOMMENDED INFLATION PRESSURES.

NOTE

IMPORTANT:

During inflation, due to air velocity, the pressure gauge cannot provide accurate pressure readings. However, preset pressures are accurate to within +/- 1 PSI. To manually check and verify the actual pressure, the compressor must be turned off.

DO NOT rely on the Auto Shut-Off function for anything other than tires. For all other inflatable objects such as sports balls, toys, and floatable items:

1. Simply screw the appropriate nozzle provided in the inflation tips kit to the tip of the air hose.
2. Attach the nozzle to the object and press the start button to turn ON.
3. When the desired firmness is achieved, press the start button to turn OFF.



THE DIGITAL PORTABLE AIR COMPRESSOR IS MOISTURE AND DUST RESISTANT, BUT NOT WATER OR DUST PROOF. NEVER OPERATE A COMPRESSOR IN SOFT SAND OR DIRT. VIBRATION WILL CAUSE THE UNIT TO SETTLE INTO THE SOFT SURFACE AND DRAW FOREIGN PARTICLES, CAUSING INTERNAL DAMAGE. NEVER EXPOSE THE COMPRESSOR TO WATER DURING OPERATION.

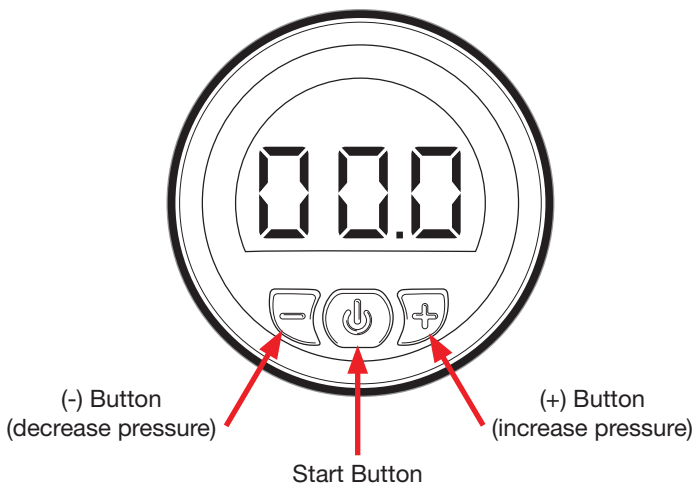


Fig. 2

Maintenance and Use Guidelines

Your compressor is equipped with a permanently lubricated, maintenance-free motor. Never try to lubricate the compressor. Use a clean, damp cloth with mild soap to clean the body.

SPECIFICATIONS

Description	Specification
Part Number	16188
Voltage	12V DC
Ingress Protection Rating	IP53
Maximum Amp Draw	20 Amps/240 Watts
In-line Fuse	25 Amps
Maximum Working Pressure	120 PSI*
Maximum Duty Cycle (@ 72°F)	25min @30 PSI
Flow Rate @ 0 PSI (13.8 Volts)	1.97 CFM
Ambient Temperature	-4°F ~ +158°F
Dimensions	9.80" (L) x 3.20" (W) x 5.60" (H)
Power Cord Length	6 ft.
Air Hose Length	16 ft.
Weight	5.95 lbs./2.7 Kgs

* Do not exceed compressor's maximum working pressure to prevent damage to the compressor.

TROUBLESHOOTING GUIDE

Problem	Possible Cause(s)	Corrective Action
Compressor does not turn on	No power, or switch in off position	Make sure compressor switch is on
	Blown fuse	Disconnect compressor from power source, replace fuse (refer to the specifications table for the correct fuse)
Excessive knocking or rattling	Worn bearing on eccentric or motor shaft Cylinder or piston ring is worn	Replace compressor
Low or no air flow. Compressor cannot pump to higher pressure.	Worn piston ring Damaged reed valve	Replace compressor

7-WAY POWER ACCESS PLUG

1. Check your power outlet rating. It is the owner's responsibility to check the vehicle's user manual and/or fuse box to be sure tow charge/accessory battery circuit has enough fuse protection for given accessory.
2. Vehicle may need to be on or running for circuit to be live.
3. It is recommended for vehicle to be running while drawing power from the vehicle's battery.
4. Some vehicles do not come equipped from the factory with the fuse for tow charge/accessory battery circuit. May need to have fuse added. Check with vehicle manufacturer for proper fuse rating, type and location.
5. Some vehicles may require the brake pedal to be pressed before power will be sent to the tow charge/accessory battery circuit.

Limited Warranty and Return Policy

Air Lift Company provides a Warranty* to the original purchaser of its Products, for the 2 year limited period of time, from the date of original purchase, that the products will be free from defects in workmanship and materials when used on cars and trucks as specified by Air Lift Company and under normal operating conditions, subject to the requirements and exclusions set forth in the full Limited Warranty and Return Policy.

*Warranty and Return Policy are available at www.airliftcompany.com/warranty and are subject to change.

WARRANTY REGISTRATION & CLAIMS

- To register your warranty, please visit:
<https://www.airliftcompany.com/support/warranty/register/>
- To submit a warranty claim, please visit:
<https://www.airliftcompany.com/support/warranty/submit-claim/>



Thank you for purchasing Air Lift Products!

Need Help?

Contact Air Lift Company Customer Service
at (800) 248-0892
or email service@airliftcompany.com.

For calls outside the U.S. or Canada,
dial +1 (517) 322-2144.



MADE IN USA
WITH GLOBAL
COMPONENTS

Air Lift Company • 2727 Snow Road • Lansing, MI 48917
or P.O. Box 80167 • Lansing, MI 48908-0167

Air Lift Company reserves the right to make changes and improvements to its products and publications at any time. For the latest version of this manual, contact Air Lift Company at (800) 248-0892 or visit airliftcompany.com.

California:  WARNING: Cancer and Reproductive Harm – www.P65Warnings.ca.gov

Printed in the USA JJC-0724