

# INSTALLATION MANUAL

# 13630

## Level of Difficulty

Easy

Installation difficulty levels are based on time and effort involved and may vary depending on the installer level of expertise, condition of the vehicle and proper tools and equipment.

## Weight Carrying Capacity

Gross trailer weight (GTW)	3,500 lbs.
Tongue weight (TW)	525 lbs.

## Parts List

Item	Qty	Description
1	1	Trailer hitch
2	4	Hex bolt, M12-1.25 x 45mm
3	4	Conical-toothed washer, 1/2"

## Tools Required

Ratchet	Torque wrench
Socket, 19mm	Flathead screwdriver
Cut-off wheel	Philips screwdriver
Tape	--

\* For a tools reference guide visit [curtmfg.com/trailer-hitch-installation](http://curtmfg.com/trailer-hitch-installation)

## Product Registration and Warranty

CURT stands behind our products with industry-leading warranties. To get copies of the product warranties, register your purchase or provide feedback, visit: [warranty.curtgroup.com/surveys](http://warranty.curtgroup.com/surveys)

## ⚠ WARNING

Never exceed the vehicle manufacturer's recommended towing capacity.

## Product Photo



## NOTICE

Visit [www.curtmfg.com](http://www.curtmfg.com) for a full-color copy of this instruction manual, as well as helpful videos, guides and much more!

Before you begin installation, read all instructions thoroughly.

Proper tools will improve the quality of installation and reduce the time required.

This installation requires:

- Underbody support trimming
- Hitch panel removal

Periodic inspection of the trailer hitch should be performed to ensure all mounting hardware remains tight and structural components are secure.

To help prevent damage to the product or vehicle, refer to the specified torque specifications when securing hardware during the installation process.

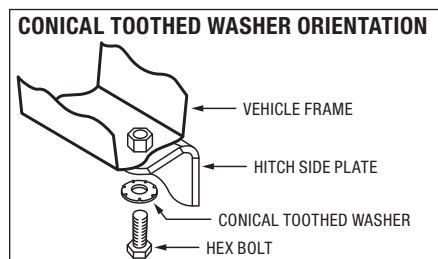
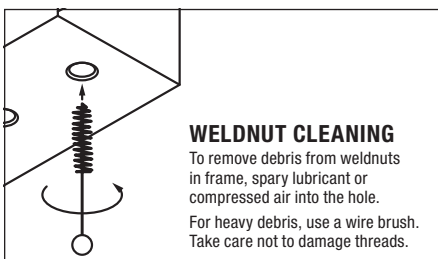
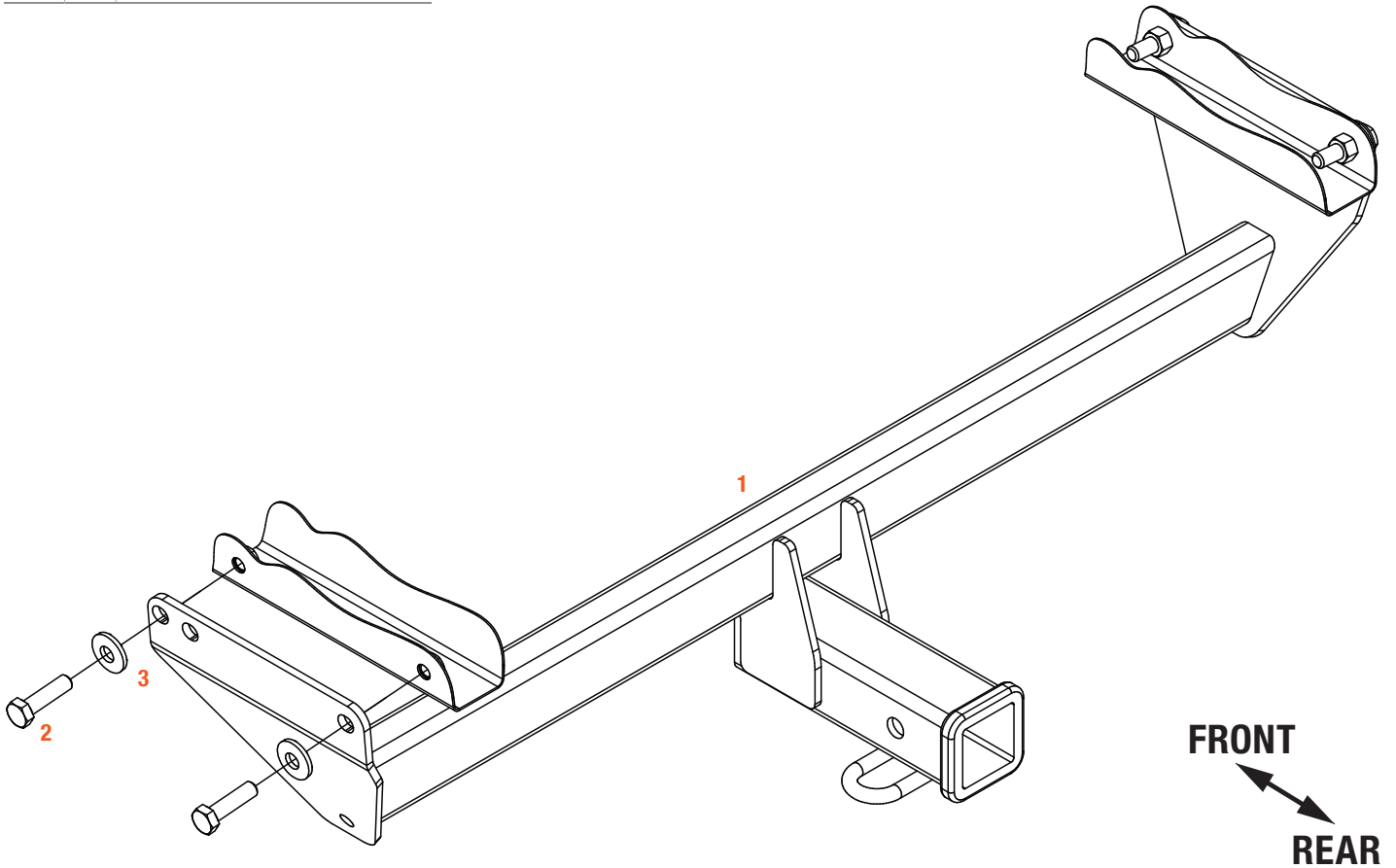
## SAFETY INSTRUCTIONS

Safety glasses should be worn at all times while installing this product.

# ASSEMBLY

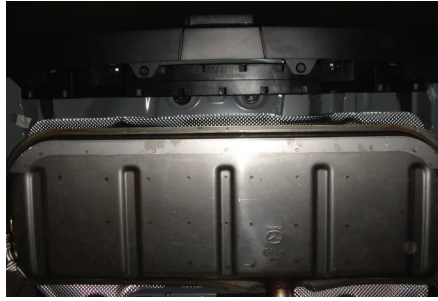
## Parts List

Item	Qty	Description
1	1	Trailer hitch
2	4	Hex bolt, M12-1.25 x 45mm
3	4	Conical-toothed washer, 1/2"



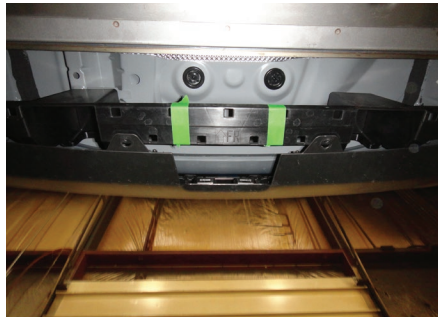
### Step 1

Remove hitch panel from the center of the bumper by removing two screws and return the panel and screws to the vehicle owner.



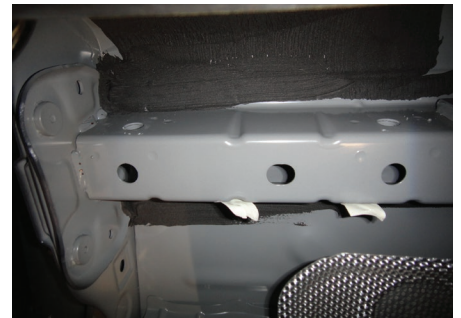
### Step 2

Use tape to mark the bumper support in line with the slot for the hitch panel and trim the center of the bumper support using a cut-off wheel.



### Step 3

Using a flathead screwdriver or paint scraper, remove the tape from the outside of the frame rails covering the weldnuts in the frame.



### Step 4

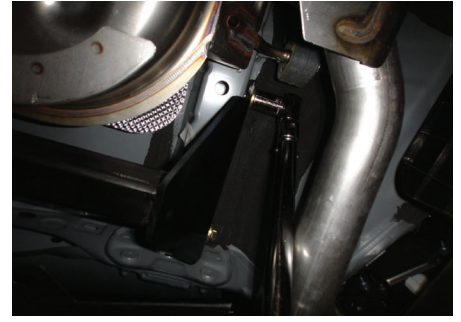
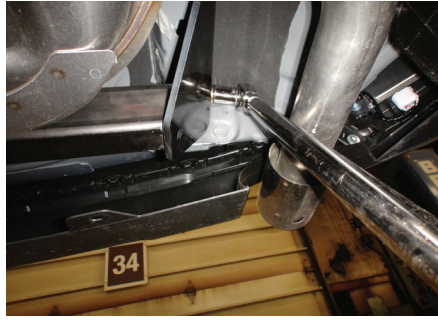
Raise the hitch into position and secure it with the supplied M12 bolts (#2) and conical-toothed washers (#3).

**Note:** Depending on the model, the forward-most mounting holes may vary. Use the slot that aligns with the weldnut in the frame.



## Step 5

Torque all M12 hardware to 86 ft-lbs.



## Final Installed Image



## TOWING BASICS & SAFETY INFORMATION

For information on safely towing your trailer, visit [curtmfg.com/understanding-towing](https://www.curtmfg.com/understanding-towing).